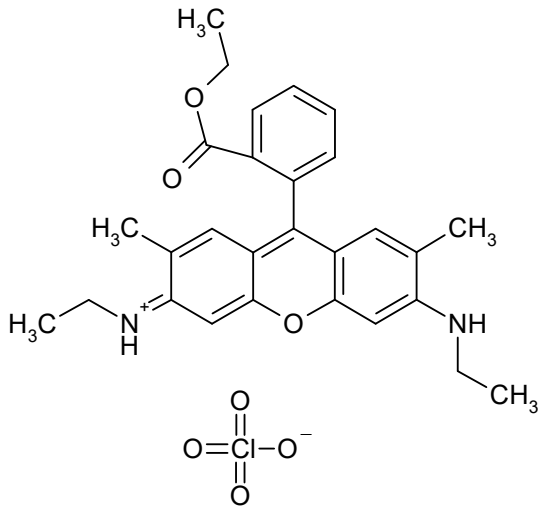


S00238

CAS #
13161-28-9

Rhodamine 6G Perchlorate



Absorption

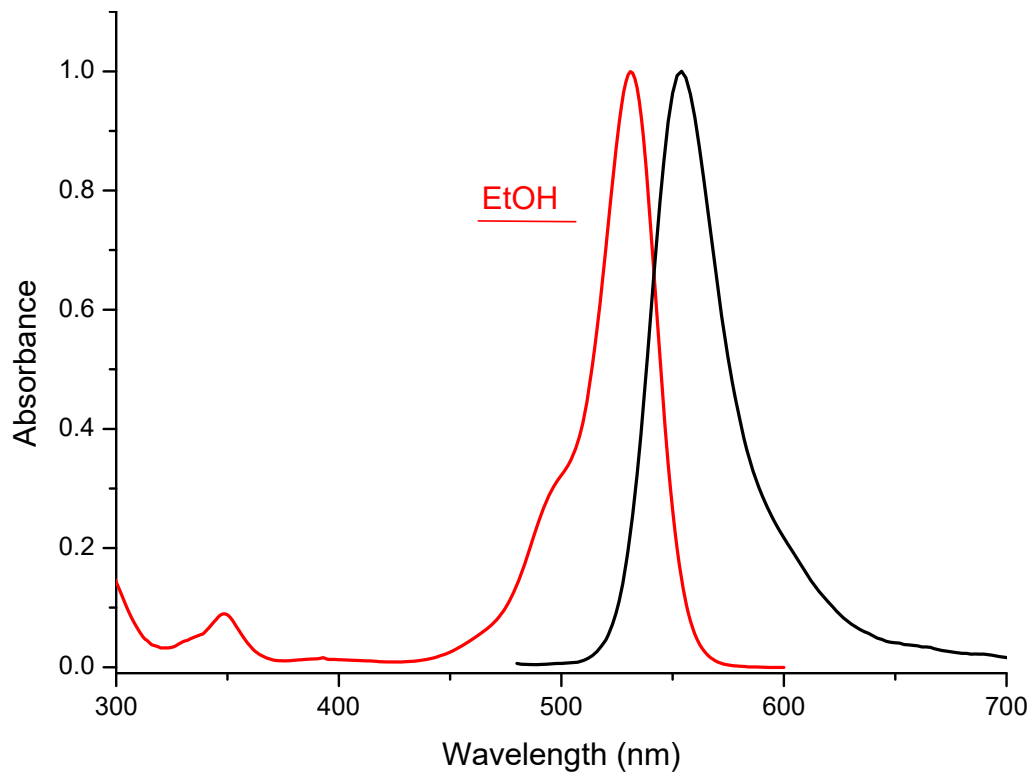
		Methanol	
528	nm	108000	M-1 cm-1
<hr/>			
		Ethanol	
531	nm		M-1 cm-1

Emission

	Ethanol
554	nm

C₂₈H₃₁ClN₂O₇

543.0215



Spectrum Info Ltd. www.spec-info.com